

Bench elements



Sanoasa *Foruua*
Wellness bench



Sanoasa *Foruua linea*
Wellness bench



Sanoasa *Collina*
Wellness bench

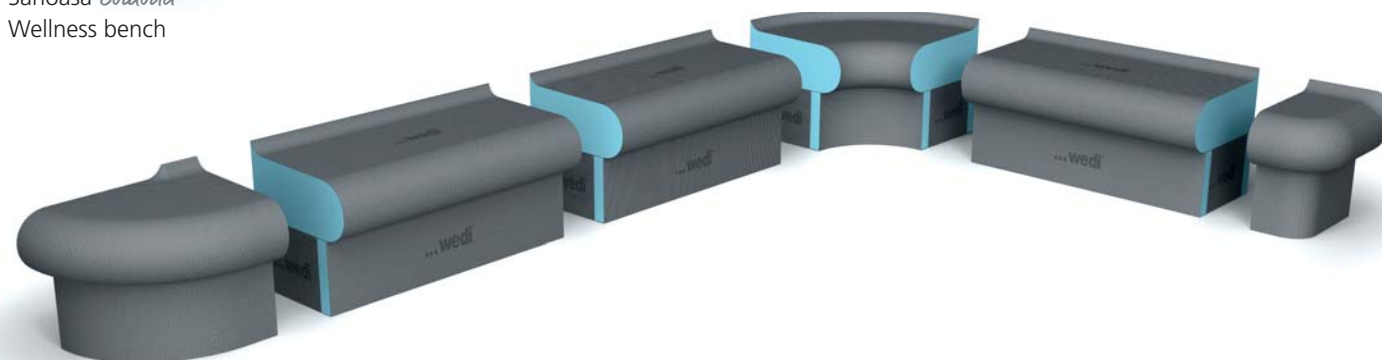


Sanoasa *Collina linea*
Wellness bench

Modular bench elements



Sanoasa *Cowoda*
Wellness bench



Sanoasa *Bellina*
Wellness bench

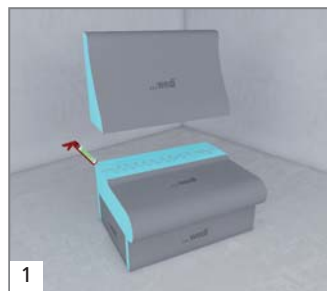
Sanoasa *Collina*^{linea} | Bench element



Sanoasa benches are available in a multitude of designs so that almost any combination of seats can be created. Straight benches, corner benches or smooth finishes – your bathrooms and wellness facilities will get an individual appearance. The following instructions use the Sanoasa Collina bench elements as an example.

wedi system components:

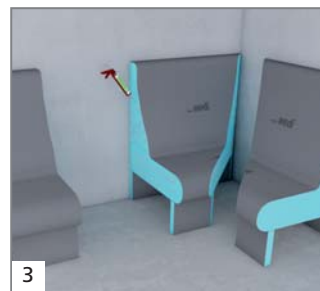
- Sanoasa *Collina*^{linea} wellness bench
- wedi 610 adhesive sealant
- wedi *Tools* self-adhesive reinforcement tape
- wedi sealing tape



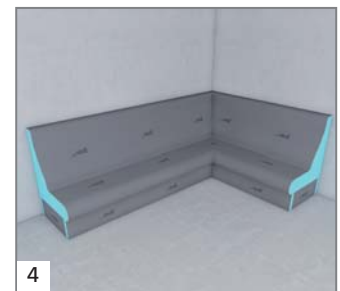
1
When using multi-part bench elements, these should be assembled before placement of the individual benches.



2
When using benches without corner elements, these should be mitred.



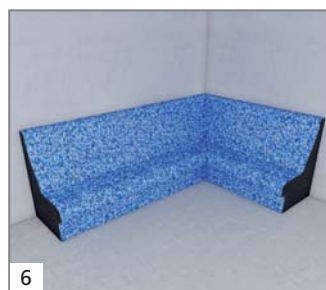
3
Connect the bench elements by using wedi 610 adhesive sealant ...



4
... to create the desired bench shape and size.



5
Apply wedi *Tools* reinforcement tape to all joints of the bench elements.



6
Then, the bench elements can be individually tiled.

! Important information:

Hot-water heating should be connected to the separately regulated heating circuit.