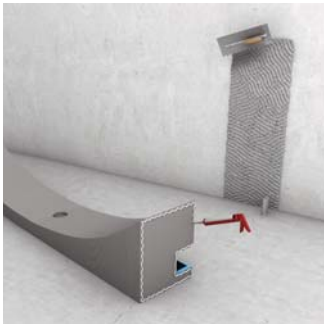


Assembly Instruction

wedi Sanbath *Cube & Wave* | Shower Unit



Installation instruction wedi Sanbath Wave Shower Unit



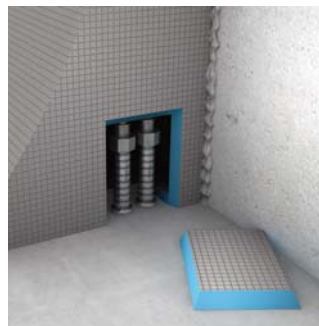
1 Apply a ½" bed of thinset mortar to the unit's contact area at the wall where the unit will be placed. Apply 4 continuous beads of wedi joint sealant to the bottom part (steel plate) in either direction. The bottom connects to the floor, when the unit is attached against the wall.



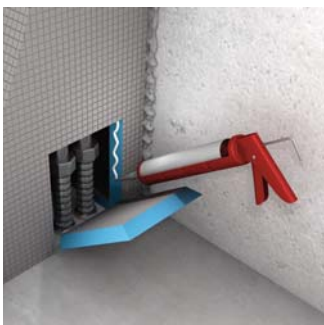
2 Fasten the shower column to the floor by using screws.



3 Apply pressure/lean weight against the unit so thinset adhesive can firmly set up between wall and Sanbath unit.



4 Connect cold and warm water supply lines (½) to the units connector threads via the inspection opening at side bottom. Make sure you align wedi connectors and supply pipes before adhesives have set. Test waterproof assembly.



5 Close the inspection opening by applying wedi joint sealant on all four sides of the mitered panel that closes the opening. Seal all seams topically with another bead of wedi joint sealant and spread flat.



6 Purchase your individual fixtures from HansGrohe (System iBox) and install when tiling commences.

